

Building Interoperability

State of Play

JHA Agencies Network Meeting
25-26 September 2019, The Hague

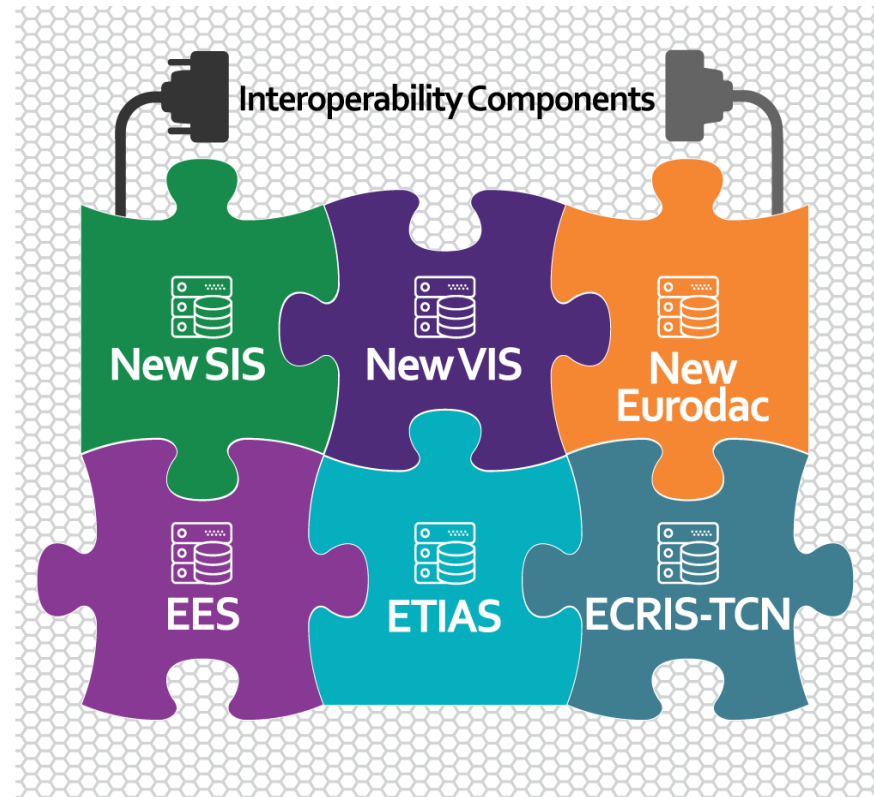


Interoperability: enhancing information exchange

Towards a New Information Architecture in the JHA domain

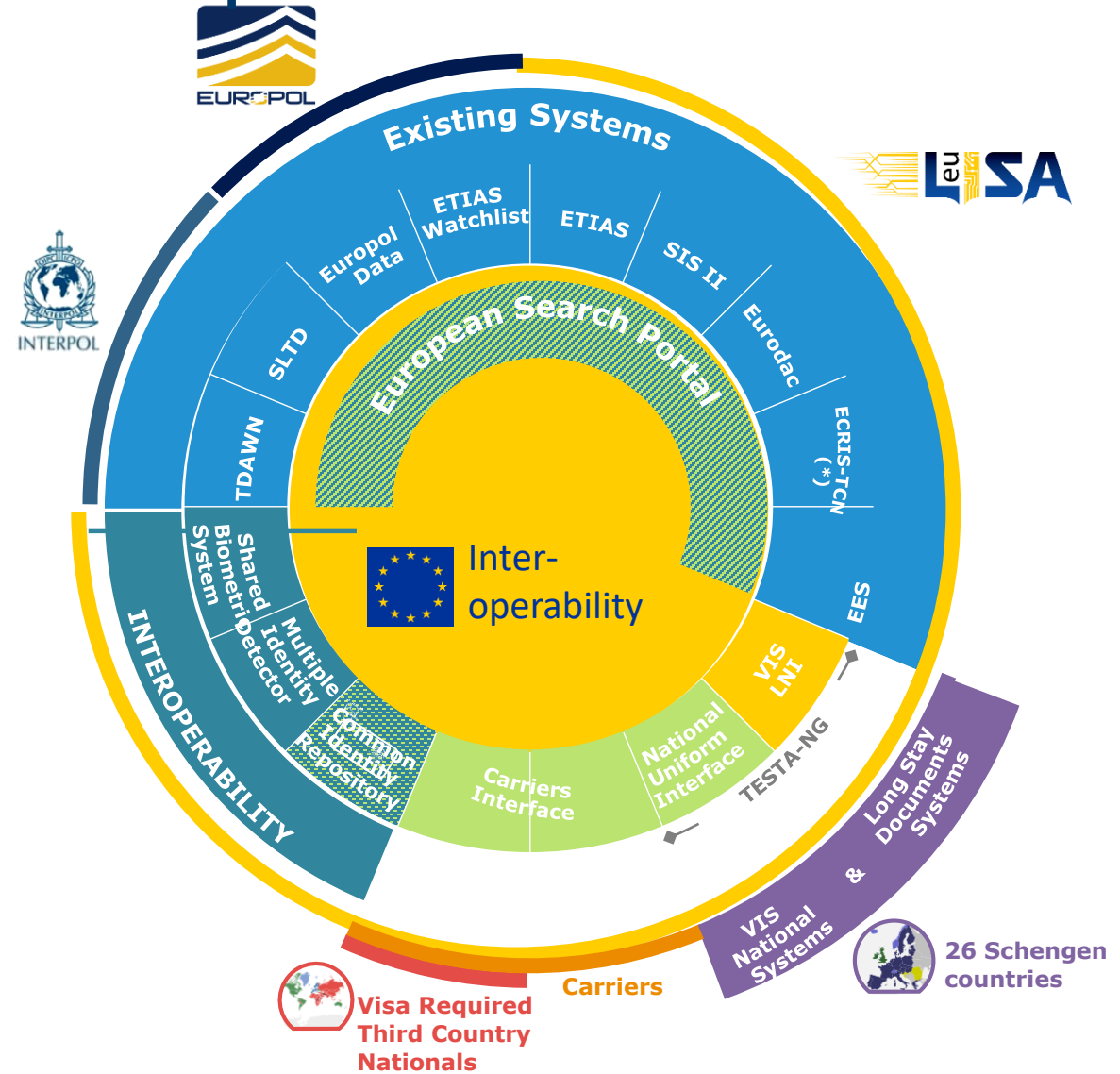


Regulations 2019/817
[borders and visa] and
2019/818 [police and
judicial cooperation]
entered into force on **11**
June 2019



Interoperability – full implementation picture & stakeholders

- Enhancement of **existing systems** as necessary and building **new systems**
- New interoperability **components** providing:
 - An interface to other systems through European Search Portal (ESP)
 - A common identity repository (CIR)
 - A shared biometric matching system (sBMS)
 - Multiple identity detection capabilities (MID)
- To be built on the **Common Interoperable Platform**



Interoperability components and expected benefits

- 4 components to improve interoperability of the EU information systems and information sharing:



- ▶ **European search portal** – a one-stop shop carrying out a simultaneous search of multiple EU information systems, in line with the users' access rights.



- ▶ **Shared biometric matching service** – a tool cross-checking biometric data (fingerprints and facial images) and detecting links between information on the same person in different EU information systems.



- ▶ **Common identity repository** – a shared container of biographical and biometric information, such as name and date of birth, stored in relevant systems about non-EU citizens.



- ▶ **Multiple identity detector** - automatic alert system detecting multiple or fraudulent identities.

+ **Central Repository for Reporting and Statistics**

Benefits

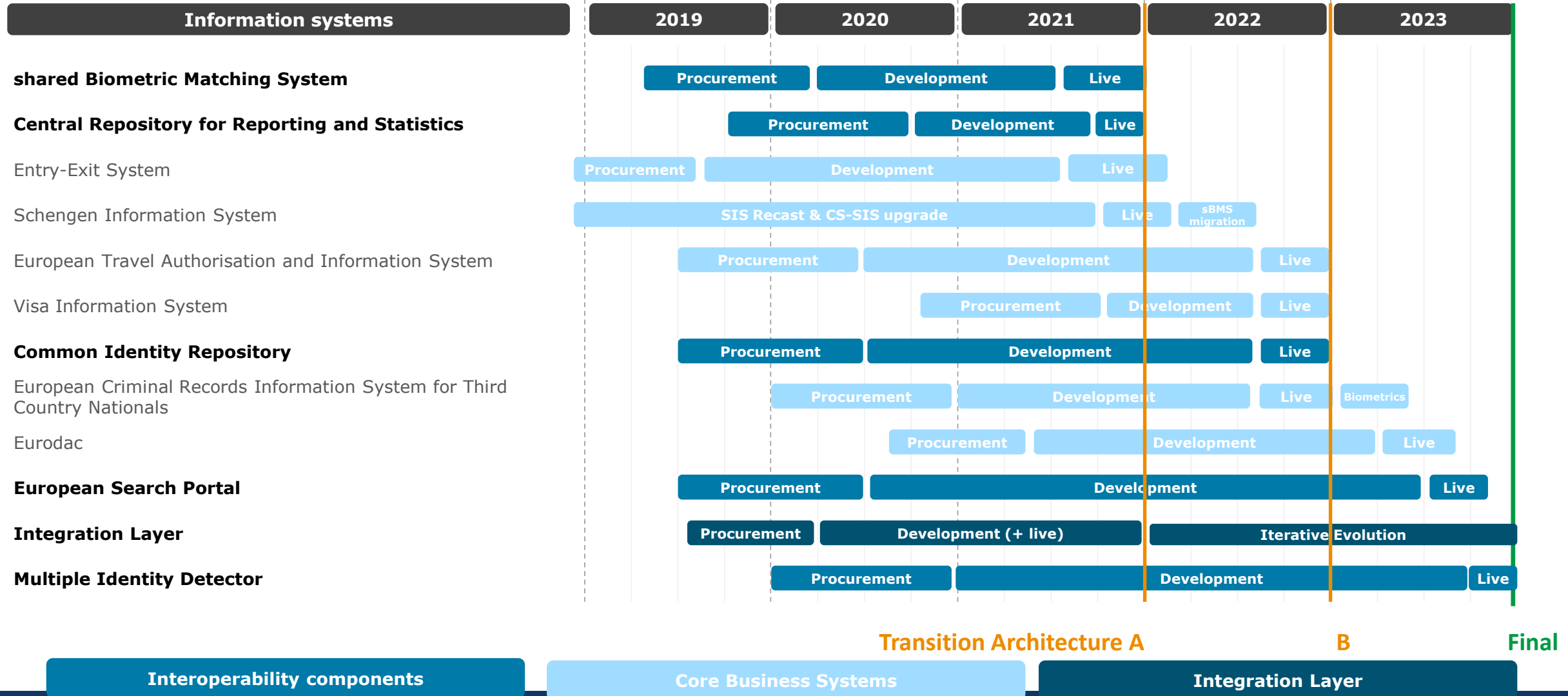


- Will increase the effectiveness of identity checks
- Will give faster access to IT-systems, while respecting all the original systems' safeguards

Interoperability training

- Training needs assessment (TNA) for **eu-LISA stakeholders in MS**
- First Interoperability **Advisory Group** January 2020
- **Cooperation with JHA Agencies** to be discussed and defined
- Training needs assessment (TNA) to be carried out also with the **JHA Agencies stakeholders in MS**
- Question to what extent **JHA Agencies staff** need training and how to coordinate and organise this

Indicative Timeline – Implementation Plan Roadmap (COM Timeline)



Thank you for your attention
Any questions?

